



# 1

## Chapter 1

---

# Scissors & Styling Razors 5

Joewell Scissors	6
Mizutani Scissors	12
Olivia Garden Scissors	14
Witte Scissors	16
Shorai Scissors	18
Scissor Holsters	20
Scissor Stands	21
Styling Razors & Blades	22



Joewell is the leading brand in its home market, Japan, as well as having very strong market positions in many European, Asian and American markets. The company was established in 1917 under the name Tokosha, originally manufacturing medical cutting tools but started manufacturing scissors for barbers in 1921. Years of research and development have resulted in no less than 200 different models for their various markets.

[www.bratt-trading.se/our-brands/joewell](http://www.bratt-trading.se/our-brands/joewell)

**Joewell is available in the following countries:**

SE, NO, FI, IS, SI, SK, CZ, EE & LV



## *The Professional Edge*



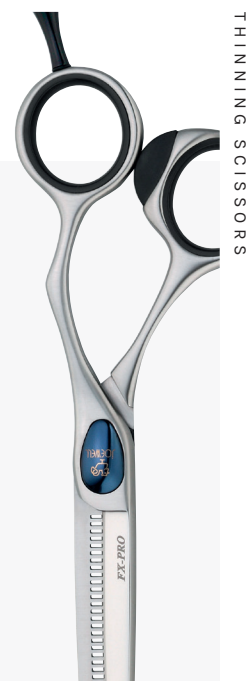
### SYMMETRIC HANDLE

The symmetry of the handle design is widely appreciated as the basic style for beauty salons. Symmetric design makes it possible to use both sides of the scissors or to change the way the scissors are held for a greater degree of freedom.



### OFFSET HANDLE

The length of the handle grid differs between still blade and moving blade. Offset handles easily fit the hand so the wrist, elbow and shoulder do not tire easily when opening or closing the scissors. Various angles and designs are available in offset types so please select according to your preference.



### THINNING SCISSORS

Thinning scissors have a serrated edge, and they can be used to add texture to a haircut, remove bulk from thicker hair or to blend the ends of the hair.

# JOEWELL®

## SYMMETRIC HANDLE



JOEWELL CLASSIC

### JOEWELL CLASSIC

**Design of handle:** Symmetric.

**Finger Rest:** Removable.

**Finger Hole:** Regular.

**Material:** Supreme Stainless Alloy, Nickel-less ( $\leq 0,6\%$ ).

**Blade:** Standard Blade.

**Screw:** Precision Flat.

**Kit includes:** Scissor Oil, Finger rings.

**Art.Nr:** 1000 (4,5"), 1001 (5,0"), 1002 (5,5"), 1003 (6,0"), 1004 (6,5"), 1005 (7,0"), 1006 (7,5")



JOEWELL NEW COBALT

### JOEWELL NEW COBALT

**Design of handle:** Symmetric.

**Finger Rest:** Removable.

**Finger Hole:** Regular.

**Material:** Cobalt Base Alloy, Black Coating, Nickel-less ( $\leq 0,6\%$ ).

**Blade:** Standard Blade.

**Screw:** Precision Flat.

**Kit includes:** Scissor Oil, Finger Rings.

**Art.Nr:** 1010 (4,5"), 1011 (5,0"), 1013 (5,5"), 1014 (6,0")



JOEWELL LC

### JOEWELL LC



**Design of handle:** Symmetric.

**Finger Rest:** Removable.

**Finger Hole:** Regular.

**Material:** Supreme Stainless Alloy, Nickel-less ( $\leq 0,6\%$ ).

**Blade:** Standard Blade.

**Screw:** Precision Flat.

**Kit includes:** Scissor Oil, Finger Rings.

**Art.Nr:** 1056 (5,0"), 1057 (5,5"), 1058 (6,0")



JOEWELL CLASSIC PRO

### JOEWELL CLASSIC PRO

**Design of handle:** Symmetric.

**Finger Rest:** Removable.

**Finger Hole:** Regular.

**Material:** Supreme Stainless Alloy, Nickel-less ( $\leq 0,6\%$ ).

**Blade:** Convex Shape.

**Screw:** Precision Flat.

**Kit includes:** Scissor Oil, Finger Rings.

**Art.Nr:** 1106 (4,5"), 1107 (5,0"), 1108 (5,5"), 1109 (6,0")



JOEWELL SUPREME POWDER METAL

### JOEWELL SPM SYMMETRIC

**Design of handle:** Symmetric.

**Finger Rest:** Removable.

**Finger Hole:** Medium.

**Material:** Powder Metal Alloy, Nickel-less ( $\leq 0,6\%$ ).

**Blade:** Sword & Convex Blade.

**Screw:** Dry Bearing Screw System.

**Kit includes:** Scissor Oil.

**Art.Nr:** 1119 (5,0"), 1120 (5,5"), 1121 (6,0")



JOEWELL NE

### JOEWELL NE

**Design of handle:** Symmetric.

**Finger Rest:** Removable.

**Finger Hole:** Regular.

**Material:** Supreme Stainless Alloy, Nickel-less ( $\leq 0,6\%$ ).

**Blade:** Standard Blade.

**Screw:** Precision Flat.

**Kit includes:** Scissor Oil, Finger Rings.

**Art.Nr:** 1130 (5,0"), 1131 (5,5")



JOEWELL®  
OFFSET HANDLE



JOEWELL NEW COBALT OFFSET

JOEWELL  
NEW COBALT F

**Design of handle:** Offset.  
**Finger Rest:** Permanent.  
**Finger Hole:** Small.  
**Material:** Cobalt Base Alloy, Black Coating, Nickel-less ( $\leq 0,6\%$ ).  
**Blade:** Standard.  
**Screw:** Precision Flat.  
**Kit includes:** Joewell Scissor Oil.

Art.Nr: 1012 (5,5" ), 1016 (6,0" )



JOEWELL CRAFT CR-610

JOEWELL  
CRAFT CR-610

**Design of handle:** Polyhedric 3D Grip.  
**Finger Rest:** Permanent.  
**Finger Hole:** Small.  
**Material:** Supreme Stainless Alloy, Nickel-less ( $\leq 0,6\%$ ).  
**Blade:** KATANA Blade.  
**Screw:** Dry Bearing Screw System.  
**Kit includes:** Joewell Scissor Oil, Finger Rings.

Art.Nr: 1031 (6,1" )



JOEWELL LSF

JOEWELL  
LSF

**Design of handle:** Semi-Offset.  
**Finger Rest:** Permanent.  
**Finger Hole:** Regular.  
**Material:** Supreme Stainless Alloy, Nickel-less ( $\leq 0,6\%$ ).  
**Blade:** Convex Shape.  
**Screw:** Thin Adjustable.  
**Kit includes:** Joewell Scissor Oil, Finger Rings.

Art.Nr: 1060 (6,5" ), 1061 (7,0" )



JOEWELL BLACK CREST

JOEWELL  
BLACK CREST

**Design of handle:** Offset.  
**Finger Rest:** Removable.  
**Finger Hole:** Regular.  
**Material:** Supreme Stainless Alloy, Nickel-less ( $\leq 0,6\%$ ).  
**Blade:** Sword and Convex.  
**Screw:** Dry Bearing System.  
**Kit includes:** Joewell Scissor Oil, Finger Rings.

Art.Nr: 1095 (5,0" ), 1096 (5,5" ), 1097 (6,0" )



JOEWELL SPM BLACK TITANIUM

JOEWELL  
SPM BLACK TITANIUM

**Design of handle:** 3D Ergonomic.  
**Finger Rest:** Permanent w. Silicon Rubber.  
**Finger Hole:** Medium.  
**Material:** Powder Metal Alloy, Black Titanium Coating, Nickel-less ( $\leq 0,6\%$ ).  
**Blade:** Sword & Flat Blade.  
**Screw:** Dry Bearing Screw System.  
**Kit includes:** Joewell Scissor Oil, Finger Rings.

Art.Nr: 1117 (5,5" ), 1118 (6,0" )



JOEWELL SPM OFFSET

JOEWELL  
SPM OFFSET

**Design of handle:** 3D Ergonomic.  
**Finger Rest:** Permanent w. Silicon Rubber.  
**Finger Hole:** Medium.  
**Material:** Powder Metal Alloy, Nickel-less ( $\leq 0,6\%$ ).  
**Blade:** Sword & Flat Blade.  
**Screw:** Dry Bearing Screw System.  
**Kit includes:** Joewell Scissor Oil, Finger Rings.

Art.Nr: 1122 (5,0" ), 1123 (5,5" ), 1124 (6,0" )

JOEWELL®  
OFFSET HANDLE



JOEWELL LBF

JOEWELL  
LBF

**Design of handle:** Swivel Offset.  
**Finger Rest:** Removable.  
**Finger Hole:** Regular.  
**Material:** Stainless Alloy, 5% Nickel.  
**Blade:** Convex.  
**Screw:** Thin Adjustable.  
**Kit includes:** Scissor Oil, Green & Pink  
Finger Rings & Finger Rests.

Art.Nr: 1112 (5,0" ), 1113 (5,5" ), 1114 (6,0" )



JOEWELL FB

JOEWELL  
FB

**Design of handle:** Semi-Offset.  
**Finger Rest:** Permanent.  
**Finger Hole:** Regular.  
**Material:** Stainless Alloy, 5% Nickel.  
**Blade:** Standard Blade.  
**Screw:** Precision Flat.  
**Kit includes:** Scissor Oil, Finger Rings.

Art.Nr: 1127 (6,5" ), 1128 (7,0" )



JOEWELL FZ70

JOEWELL  
FZ70

**Design of handle:** Offset.  
**Finger Rest:** Permanent.  
**Finger Hole:** Small.  
**Material:** Supreme Stainless Alloy,  
Nickel-less ( $\leq 0,6\%$ ).  
**Blade:** Convex Shape.  
**Screw:** Thin Adjustable.  
**Kit includes:** Scissor Oil.

Art.Nr: 1129 (7,0" )



JOEWELL FX

JOEWELL  
FX

**Design of handle:** Offset 3D grip.  
**Finger Rest:** Removable.  
**Finger Hole:** Regular.  
**Material:** Supreme Stainless Alloy,  
Nickel-less ( $\leq 0,6\%$ ).  
**Blade:** Standard.  
**Screw:** Thin Adjustable.  
**Kit includes:** Scissor Oil, Finger Rings.

Art.Nr: 1141 (5,5" ), 1142 (6,0" )



JOEWELL FX PRO

JOEWELL  
FX PRO

**Design of handle:** Offset 3D Grip.  
**Finger Rest:** Removable.  
**Finger Hole:** Regular.  
**Material:** Supreme Stainless Alloy,  
Nickel-less ( $\leq 0,6\%$ ).  
**Blade:** Sword & Flat Blade.  
**Screw:** Dry Bearing Screw System.  
**Kit includes:** Scissor Oil.

Art.Nr: 1145 (5,0" ), 1146 (5,5" ), 1147 (6,0" )



JOEWELL FX LH

JOEWELL  
FX LH

**Design of handle:** Offset 3D Grip.  
**Finger Rest:** Removable.  
**Finger Hole:** Regular.  
**Material:** Supreme Stainless Alloy,  
Nickel-less ( $\leq 0,6\%$ ).  
**Blade:** Standard Blade  
**Screw:** Thin Adjustable  
**Kit includes:** Scissor Oil, Finger Rings.

Art.Nr: 1151 (5,5" )



JOEWELL®  
OFFSET HANDLE



JOEWELL FX PRO PINK GOLD

JOEWELL  
FX PRO PINK GOLD

**Design of handle:** Offset 3D Grip.  
**Finger Rest:** Removable.  
**Finger Hole:** Regular.  
**Material:** Supreme Stainless Alloy, Pink Gold Coating, Nickel-less ( $\leq 0,6\%$ ).  
**Blade:** Sword & Flat Blade.  
**Screw:** Dry Bearing System.  
**Kit includes:** Scissor Oil, Finger rings.  
**Art.Nr:** 1152 (5,0" ), 1153 (5,5" ), 1154 (6,0" )



JOEWELL X

JOEWELL  
X

**Design of handle:** Offset 3D Grip.  
**Finger Rest:** Removable.  
**Finger Hole:** Regular.  
**Material:** Supreme Stainless Alloy, 5% Nickel.  
**Blade:** Standard Blade.  
**Screw:** Precision Flat.  
**Kit includes:** Scissor Oil, Finger Rings.  
**Art.Nr:** 1155 (5,25" ), 1156 (5,75" )



JOEWELL SZ

JOEWELL  
SZ

**Design of handle:** Semi-Offset.  
**Finger Rest:** Removable.  
**Finger Hole:** Regular.  
**Material:** Stainless Alloy, 5% Nickel.  
**Blade:** Convex Shape.  
**Screw:** Dry Bearing System.  
**Kit includes:** Scissor Oil, Finger Rings.  
**Art.Nr:** 1157 (5,25" ), 1158 (5,75" )



JOEWELL TR

JOEWELL  
TR

**Design of handle:** Offset, Rubber Coating.  
**Finger Rest:** Removable.  
**Finger Hole:** Regular.  
**Material:** Supreme Stainless Alloy, Blue Titanium Coating, Nickel-less ( $\leq 0,6\%$ ).  
**Blade:** Convex Shape.  
**Screw:** Precision Flat.  
**Kit includes:** Scissor Oil, Finger Rings.  
**Art.Nr:** 1160 (5,25" ), 1161 (5,75" )



JOEWELL ZN

JOEWELL  
ZN

**Design of handle:** Semi-Offset.  
**Finger Rest:** Permanent.  
**Finger Hole:** Regular.  
**Material:** Supreme Stainless Alloy, Nickel-less ( $\leq 0,6\%$ ).  
**Blade:** Sword & Convex Blade.  
**Screw:** Dry Bearing Screw System.  
**Kit includes:** Scissor Oil.  
**Art.Nr:** 1170 (5,0" ), 1171 (5,5" ), 1172 (6,0" )



JOEWELL FX PRO BLACK SKULL

JOEWELL  
FX PRO BLACK SKULL

**Design of handle:** Offset 3D Grip.  
**Finger Rest:** Removable.  
**Finger Hole:** Regular.  
**Material:** Cobalt Based Alloy, Black Titanium Coating, Nickel-less ( $\leq 0,6\%$ ).  
**Blade:** Sword & Flat Blade.  
**Screw:** Dry Bearing Screw System.  
**Kit includes:** Scissor Oil, Finger Rings.  
**Art.Nr:** 1184 (5,0" ), 1185 (5,5" ), 1186 (6,0" )

# JOEWELL®

## THINNING SCISSORS



JOEWELL THINNING E40

### JOEWELL THINNING E40

**Design of handle:** Symmetric.  
**Finger Rest:** Dual, Removable.  
**Finger Hole:** Regular.  
**Material:** Supreme Stainless Alloy,  
 Nickel-less ( $\leq 0,6\%$ ).  
**Blade:** Thinning, 40 Teeth, 35% Cut Ratio.  
**Screw:** Precision Flat.  
**Kit includes:** Scissor Oil, Finger Rings.

Art.Nr: 1023 (5,5" )



JOEWELL THINNING E30

### JOEWELL THINNING E30

**Design of handle:** Symmetric.  
**Finger Rest:** Dual, Removable.  
**Finger Hole:** Regular.  
**Material:** Supreme Stainless Alloy,  
 Nickel-less ( $\leq 0,6\%$ ).  
**Blade:** Thinning, 30 Teeth, 15% Cut Ratio.  
**Screw:** Precision Flat.  
**Kit includes:** Scissor Oil, Finger Rings.

Art.Nr: 1024 (5,5" )



JOEWELL BLACK CREST THINNING

### JOEWELL BC THINNING

**Design of handle:** Offset.  
**Finger Rest:** Removable.  
**Finger Hole:** Regular.  
**Material:** Supreme Stainless Alloy,  
 Black Titanium and Rubber Coated Handle.  
**Blade:** Thinning, 40 Teeth, 35% Cut Ratio.  
**Screw:** Dry Bearing Screw System.  
**Kit includes:** Scissor Oil, Finger Rings.

Art.Nr: 1098 (5,9" )



JOEWELL FX PRO E40

### JOEWELL FX PRO E40

**Design of handle:** Offset 3D Grip.  
**Finger Rest:** Removable.  
**Finger Hole:** Regular.  
**Material:** Supreme Stainless Alloy,  
 Nickel-less ( $\leq 0,6\%$ ).  
**Blade:** Thinning, 40 Teeth, 35% Cut Ratio.  
**Screw:** Dry Bearing Screw System.  
**Kit includes:** Scissor Oil, Finger Rings.

Art.Nr: 1143 (5,9" )



JOEWELL SPE-40 THINNING

### JOEWELL SPE-40 THINNING

**Design of handle:** Semi-Offset.  
**Finger Rest:** Permanent with Silicon Rubber.  
**Finger Hole:** Regular.  
**Material:** Super Alloy,  
 Nickel-less ( $\leq 0,6\%$ ).  
**Blade:** Thinning, 40 teeth, 35 % Cut Ratio.  
**Screw:** Dry Bearing Screw System.  
**Kit includes:** Scissor Oil, Finger Rings.

Art.Nr: 1177 (6,0" )

# Mizutani 美 Scissors

Mizutani Scissors have been one of the most popular hair styling scissors among the top professional hair stylists throughout the world for its impeccable quality and superb usability. All Mizutani Scissors are 100% handcrafted by a team of highly skilled craftsmen at the factory in Chiba, Japan. From cutting steel to polishing for the finish, each shear receives the closest attention throughout the process to ensure the highest quality.

[www.bratt-trading.se/our-brands/mizutani](http://www.bratt-trading.se/our-brands/mizutani)

Mizutani is available in the following countries:

SE, NO, DK, FI & IS



## CUTTING SCISSORS

Handmade by Mizutani, with razor sharp hollow ground blades and ergonomic design. Offset handles easily fit the hand so the wrist, elbow and shoulder do not tire easily when opening or closing the scissors.



### 01. CUT S

Ergonomic scissor in Japanese Cobalt Molybdenum Steel. Convex and Concave blades with a large screw and click system. Regular sized finger holes. The significantly sharper peaks and the light material structure characterize this model.

**Art.Nr:** 1235 (5,5"), 1236 (6,0"), 1237 (6,5")

### 02. ACRO FIT SWIVEL S/Q

Handmade by Mizutani in Japanese Cobalt Molybdenum Steel. Convex blades with adjustable screw system. Ergonomic 360° thumb pad with regular sized finger holes.

**Art.Nr:** 1255 (5,0"), 1256 (5,5"), 1257 (6,0")





# Mizutani 美 Scissors

JAPANESE QUALITY



04. MIZUTANI FIT BLACK SMITH TITANIUM



05. MIZUTANI FIT

## THINNING SCISSORS

Handmade by Mizutani, with razor sharp hollow ground blades and ergonomic design. Can be used to add texture to a haircut, remove bulk from thicker hair or to blend the ends of the hair.



06. MIZUTANI FIT THINNING

### 03. MIZUTANI V3 NEW STYLE

A Japanese handmade scissor in Stainless Steel. Razor sharp Convex blades with adjustable screw system. Offset handle and regular sized finger holes. Finger rings are included in the kit.

**Art.Nr:** 1260 (5,0"), **1261 (5,5")**, 1262 (6,0")

### 04. MIZUTANI FIT BLACK SMITH TITANIUM

Handmade by Mizutani in Stainless Steel. Black titanium coating. Razor sharp Convex blades with adjustable screw system. Offset handle and regular sized finger holes. Finger rings are included in the kit.

**Art.Nr:** 1267 (5,5"), **1268 (6,0")**, 1269 (6,5")

### 05. MIZUTANI FIT

Handmade stainless steel scissor. Offset handle and Convex blades with adjustable screw system. Regular sized finger holes. Finger rings are included in the kit. Also available for the left handed.

**Art.Nr:** 1270 (5,0"), **1271 (5,5")**, 1272 (6,0"), **1273 (6,5")**, 1276 (5,5" LH)

### 06. MIZUTANI FIT THINNING

Handmade by Mizutani in Stainless Steel. Razor sharp Convex blades with adjustable screw system. Offset handle and regular sized finger holes. Finger rings are included in the kit. Also available for the left handed.

**Art.Nr:** 1274 (5,5"), **1278 (5,5", LH)**



Olivia Garden was founded in Belgium in 1968 by Jean and Micheline Renette. The company has a long history of designing and promoting innovative high quality products engineered to fulfil hairdressers' professional needs. Today, Olivia Garden is a leader in the salon industry and its products are sold in over 70 countries around the world.

[www.bratt-trading.se/our-brands/olivia-garden](http://www.bratt-trading.se/our-brands/olivia-garden)

Olivia Garden is available in the following countries:  
SE, NO, DK, FI, IS, SI, SK, EE, LV, HU, CZ & NL



*Hairdressing is not just craftsmanship.  
It is art.*



OG XTREME

### OLIVIA GARDEN XTREME

**Design of handle:** Offset.

**Finger Rest:** Permanent.

**Finger Hole:** Regular.

**Material:** Alloy steel.

**Blade:** Convex shape.

**Screw:** Micro Adjustable.

**Kit includes:** Scissor Oil, Finger rings.

**Art.Nr:** 1500 (5,0"), 1501 (5,75")



OG XTREME THINNER

### OLIVIA GARDEN XTREME THINNER

**Design of handle:** Offset.

**Finger rest:** Permanent.

**Finger hole:** Regular.

**Material:** Alloy steel.

**Blade:** Thinning, 35 Teeth with micro-serration.

**Screw:** Micro adjustable.

**Art.Nr:** 1502 (6,0")



OG XTREME SET

### OLIVIA GARDEN XTREME SET

A set with the scissor Olivia Garden Xtreme 5.75 (1501) and the thinner scissor (1502).

Packed in a beautiful designer case.

**Art.Nr:** 1504



OG SILKCUT

**OLIVIA GARDEN  
SILKCUT**

**Design of handle:** Offset.  
**Finger rest:** Permanent.  
**Finger hole:** Regular.  
**Material:** Alloy steel.  
**Blade:** Convex shape.  
**Screw:** Adjustable.

**Art.Nr:** 1510 (5,0"), 1511 (5,5"), 1513 (6,5)



OG SILKCUT THINNER

**OLIVIA GARDEN  
SILKCUT THINNER**

**Design of handle:** Offset.  
**Finger rest:** Permanent.  
**Finger hole:** Regular.  
**Material:** Alloy steel.  
**Blade:** Thinning, 35 Teeth with micro-serration.  
**Screw:** Micro adjustable.

**Art.Nr:** 1514 (6,0")



OG SILKCUT MATT BLACK

**OLIVIA GARDEN  
SILKCUT MB**

**Design of handle:** Offset.  
**Finger rest:** Permanent.  
**Finger hole:** Regular.  
**Material:** Alloy steel.  
**Blade:** Convex shape.  
**Screw:** Adjustable.

**Art.Nr:** 1520 (5,75")



OG SILKCUT MATT BLACK THINNING

**OLIVIA GARDEN  
SILKCUT MB THINNING**

**Design of handle:** Offset.  
**Finger rest:** Permanent.  
**Finger hole:** Regular.  
**Material:** Alloy steel.  
**Blade:** Thinning, 35 Teeth with micro-serration.  
**Screw:** Adjustable.

**Art.Nr:** 1521 (6,0")



OG SILKCUT PRO

**OLIVIA GARDEN  
SILKCUT PRO**

**Design of handle:** Offset.  
**Finger rest:** Permanent.  
**Finger hole:** Regular.  
**Material:** Alloy steel.  
**Blade:** Convex shape.  
**Screw:** Ball bearing pivot screw.  
Adjustable with the included tool.

**Art.Nr:** 1525 (5,0"), 1526 (5,75"), 1527 (6,50")  
1532 (5,0" LH), 1533 (5,75" LH), 1534 (6,50" LH)

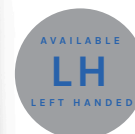


OG SILKCUT PRO THINNING

**OLIVIA GARDEN  
SILKCUT THINNING**

**Design of handle:** Offset.  
**Finger rest:** Permanent.  
**Finger hole:** Regular.  
**Material:** Alloy steel.  
**Blade:** Thinning, 35 Teeth with micro-serration.  
**Screw:** Ball bearing pivot screw.  
Adjustable with the included tool.

**Art.Nr:** 1528 (6,0"), 1535 (6,0" LH)





## Witte, Solingen

For more than 35 years, Witte has been producing and perfecting scissors at their headquarters in Solingen, Germany. With a philosophy to unite the old tradition of scissors production with the best technology and innovation. Rose Line is their main brand for really exceptional scissors for hairdressers and they all proudly bear the quality seal "Made in Solingen".



[www.bratt-trading.se/our-brands/witte](http://www.bratt-trading.se/our-brands/witte)

Witte/Roseline is available in all countries except: PL & HU

*Tradition and technology  
in perfection*



ROSE LINE

### ROSE LINE SHOCK PINK

**Design of handle:** Symmetric.  
**Finger Rest:** Removable.  
**Finger Hole:** Regular.  
**Material:** Satin Stainless Steel.  
**Blade:** Micro-Serrated.  
**Screw:** Flat Adjustable.  
**Kit includes:** Finger Rings.

**Art.Nr:** 1352 (5,5"), 1355 (6,0")



ROSE LINE

### ROSE LINE SHOCK ORANGE

**Design of handle:** Symmetric.  
**Finger Rest:** Removable.  
**Finger Hole:** Regular.  
**Material:** Satin Stainless Steel.  
**Blade:** Micro-Serrated.  
**Screw:** Flat Adjustable.  
**Kit includes:** Finger Rings.

**Art.Nr:** 1350 (5,5"), 1353 (6,0")



ROSE LINE

### ROSE LINE SHOCK YELLOW

**Design of handle:** Symmetric.  
**Finger Rest:** Removable.  
**Finger Hole:** Regular.  
**Material:** Satin Stainless Steel.  
**Blade:** Micro-Serrated.  
**Screw:** Flat Adjustable.  
**Kit includes:** Finger Rings..

**Art.Nr:** 1351 (5,5"), 1354 (6,0")



WITTE, SOLINGEN



ROSE LINE

ROSE  
LINE

**Design of handle:** Symmetric.  
**Finger Rest:** Removable.  
**Finger Hole:** Regular.  
**Material:** Satin Stainless Steel.  
**Blade:** Micro-Serrated.  
**Screw:** Flat Adjustable.  
**Kit includes:** Finger Rings.

**Art.Nr:** 1319 (4,5" 82045), **1320 (5,0" 82050),**  
1321 (5,5" 82055), **1322 (6,0" 82060),**  
1323 (6,5" 82065), **1337 (5,0" 820155 LH)**



ROSE LINE THINNING

ROSE LINE  
THINNING

**Design of handle:** Symmetric.  
**Finger Rest:** Removable.  
**Finger Hole:** Regular.  
**Material:** Satin Stainless Steel.  
**Blade:** 5,0" + 5,5" LH - Thinning, 38 Teeth,  
6,5" - Thinning, 44 Teeth.  
**Screw:** Flat Adjustable.  
**Kit includes:** Finger Rings.

**Art.Nr:** 1330 (5,0" 82051), **1331 (6,5" 82193),**  
1335 (5,5" 82151 LH)



ROSE LINE D-THINNING

ROSE LINE  
D-THINNING

**Design of handle:** Symmetric.  
**Finger Rest:** Removable.  
**Finger Hole:** Regular.  
**Material:** Satin Stainless Steel.  
**Blade:** Double Thinning, 28 Teeth.  
**Screw:** Flat Adjustable.  
**Kit includes:** Finger Rings.

**Art.Nr:** 1334 (5,25" 82052)



SOLINGEN SCISSORS

SOLINGEN  
SCISSORS

**Design of handle:** Symmetric.  
**Finger Rest:** Removable.  
**Finger Hole:** Regular.  
**Material:** Satin Stainless Steel.  
**Blade:** Micro-Serrated.  
**Screw:** Flat Adjustable.  
**Kit includes:** Finger Rings.

**Art.Nr:** 1379 (5,0" P500), **1380 (5,5" P550),**  
1381 (6,0" P600)



SOLINGEN THINNING

SOLINGEN  
THINNING

**Design of handle:** Symmetric.  
**Finger Rest:** Removable.  
**Finger Hole:** Regular.  
**Material:** Satin Stainless Steel.  
**Blade:** Thinning, 33 Teeth.  
**Screw:** Flat Adjustable.  
**Kit includes:** Finger Rings.

**Art.Nr:** 1385 (5,0" P353)



# 将来 Shōrai

Shōrai is a scissor brand that really gives you value for money. With Shōrai you get a handmade scissor with good steel quality to an affordable price. It's the perfect choice for schools, trainees and newly examined hairdressers.

[www.bratt-trading.se/our-brands/shorai](http://www.bratt-trading.se/our-brands/shorai)



*A Good Choice*



SHORAI CLASSIC

## SHORAI CLASSIC

**Design of handle:** Offset.  
**Finger Rest:** Removable.  
**Finger Hole:** Regular.  
**Material:** Stainless Steel.  
**Blade:** Standard.  
**Screw:** Precision Flat.  
**Kit includes:** Finger Rings.

**Art.Nr:** 1450 (5,0"), **1451 (5,5")**, 1452 (6,0")



SHORAI ERGONOMIC

## SHORAI ERGONOMIC

**Design of handle:** Offset.  
**Finger Rest:** Permanent.  
**Finger Hole:** Small.  
**Material:** Stainless Steel.  
**Blade:** Standard.  
**Screw:** Precision Flat.  
**Kit includes:** Finger Rings.

**Art.Nr:** 1455 (5,0"), **1456 (5,5")**, 1457 (6,0")



SHORAI SHARP CUT

**NEW**

AVAILABLE  
**LH**  
LEFT HANDED

## SHORAI SC

**Design of handle:** Offset.  
**Finger Rest:** Permanent.  
**Finger Hole:** Regular.  
**Material:** Stainless Steel.  
**Blade:** Standard.  
**Screw:** Adjustable.

**Art.Nr:** 1460 (5,5"), **1461 (6,0")**, 1462 (6,5"),  
**1475 (5,5" LH)**

将来  
Shōrai  
A GOOD CHOICE



SHORAI BARBER CUT

SHORAI  
BARBER CUT

**Design of handle:** Offset.  
**Finger Rest:** Permanent.  
**Finger Hole:** Regular.  
**Material:** Stainless Steel.  
**Blade:** Standard.  
**Screw:** Precision Flat.

Art.Nr: 1465 (6,5"), 1466 (7,0")



SHORAI SC BLACK

SHORAI SC  
BLACK

**Design of handle:** Offset.  
**Finger Rest:** Permanent.  
**Finger Hole:** Regular.  
**Material:** Stainless Steel. Black coating.  
**Blade:** Standard.  
**Screw:** Adjustable.

Art.Nr: 1470 (5,5"), 1471 (6,0")



SHORAI THINNING 6040

SHORAI  
THINNING 6040

**Design of handle:** Offset.  
**Finger Rest:** Permanent.  
**Finger Hole:** Small.  
**Material:** Stainless Steel.  
**Blade:** Thinning, 40 Teeth.  
**Screw:** Precision Flat.

Art.Nr: 1480 (6,0")



SHORAI SC THINNING

SHORAI  
SC THINNING

**Design of handle:** Offset.  
**Finger Rest:** Permanent.  
**Finger Hole:** Standard.  
**Material:** Stainless Steel.  
**Blade:** Thinning, 30 Teeth.  
**Screw:** Precision Flat.

Art.Nr: 1463 (6,0"), 1476 (6,0" LH)



SHORAI SC THINNING BLACK

SHORAI SC THINNING  
BLACK

**Design of handle:** Offset.  
**Finger Rest:** Permanent.  
**Finger Hole:** Standard.  
**Material:** Stainless Steel. Black coating.  
**Blade:** Thinning, 30 Teeth.  
**Screw:** Precision Flat.

Art.Nr: 1473 (6,0")

# CHAPTER ONE

A MUST HAVE FOR EVERY STYLIST

## SCISSOR HOLSTERS

*A must-have for every stylist*



MIZUTANI  
HOLSTER, SWORD

Art.Nr: 1298



SCISSOR POUCH,  
LEATHER

Art.Nr: 1675



SCISSOR HOLSTER,  
LEATHER

Art.Nr: 1677



CARPENTER HOLSTER,  
LEATHER

Art.Nr: 1678



SCISSOR HOLSTER,  
WILD WEST

Art.Nr: 1680



SCISSOR HOLSTER,  
HEART

Art.Nr: 1683



CARPENTER  
HOLSTER

Art.Nr: 1685



HOLSTER BIG,  
WITH BAND

Art.Nr: 1688



SCISSOR HOLSTER,  
FAST DRAW

Art.Nr: 1690



SCISSOR HOLSTER,  
STRAPPED

Art.Nr: 1691



CARPENTER  
HOLSTER DE LUXE

Art.Nr: 1692



SCISSOR HOLSTER,  
POCKET

Art.Nr: 1698



DENIM  
TOOL BELT

Art.Nr: 1670



# CHAPTER ONE

A MUST HAVE FOR EVERY STYLIST

## SCISSOR STANDS & CASES



### SCISSOR CASE

Holds up to 25 scissors.  
Products are NOT included.

Art.Nr: 9115



### SCISSOR STAND

Fits 6 scissors.

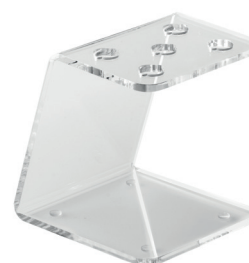
Art.Nr: 4995



### SCISSOR & ACCESSORIES STAND

Products are NOT included.

Art.Nr: 4998



### SCISSOR STAND ACRYL

Art.Nr: 4996



### SCISSOR STAND BLACK

Art.Nr: 4997

SCISSOR STAND

SCISSOR STAND ACRYL

SCISSOR STAND BLACK

# CHAPTER ONE

A MUST HAVE FOR EVERY STYLIST

## STYLING RAZORS & BLADES

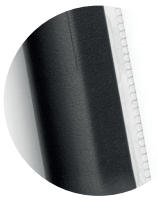


01. **AURA RAZOR KIT** A practical shaving tool for contouring of hair, beard, mustache and eye brows. Perfect for creating hair tattoos. Kit includes razor and 5 blades. **Art.Nr:** 1910
02. **AURA RAZOR BLADES REFILL** A pack of 10 blades. **Art.Nr:** 1912
03. **FEATHER BLADE, PINK** A pack of 50pcs 30% cut ratio blades. **Art.Nr:** 1992
04. **FEATHER BLADE, RAPID CUT** A pack of 50pcs 84% cut ratio blades. Sharper cutting edge for smooth glide. **Art.Nr:** 1994
05. **FEATHER BLADE, REGULAR TYPE EX** A pack of 50pcs 60% cut ratio blades. **Art.Nr:** 1999
06. **RAZOR WITH 10 BLADES** A razor sharp knife most commonly used to remove unwanted hair on the neck. For the more skilled hand, the razor can be used for slicing. **Art.Nr:** 1980
07. **RAZOR BLADES LONG 10X10 PACK** **Art.Nr:** 1981
08. **DISPOSAL CASE FOR BLADES** Safely dispose of your used razor blades. **Art.Nr:** 1987



# CHAPTER ONE

A MUST HAVE FOR EVERY STYLIST



EYEBROW RAZOR

## EYEBROW RAZOR

For shaping and styling.  
3 pcs/pack.

Art.Nr: 1915



RAZOR WITH 10 BLADES

## RAZOR WITH 10 BLADES

Use together with original feather blades.

Art.Nr: 1990



ORIGINAL FEATHER STYLING RAZOR

## ORIGINAL FEATHER

Use together with original feather blades.

Art.Nr: 1993



BLACK RUBBER STYLING RAZOR

## BLACK RUBBER

Use together with original feather blades.

Art.Nr: 1995



TWO IN ONE RAZOR

## TWO IN ONE RAZOR

Blades are not included.

Art.Nr: 1988



TWO IN ONE RAZOR BLADES

## TWO IN ONE RAZOR BLADES

Use the same blade twice with the 2-in-1 system. 10pcs 70% cut ratio blades.

Art.Nr: 1997